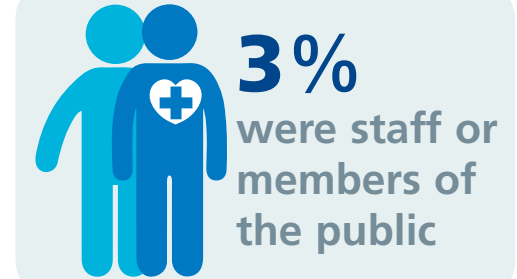
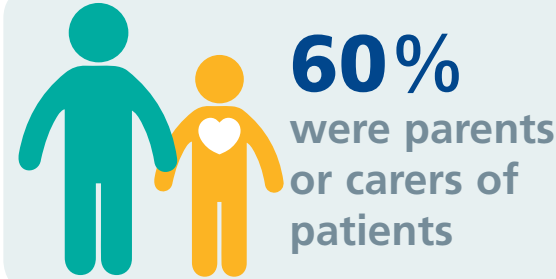
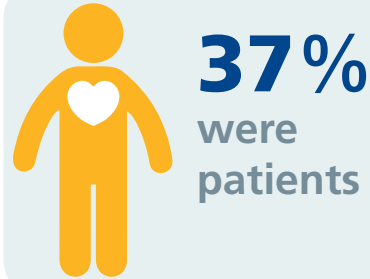
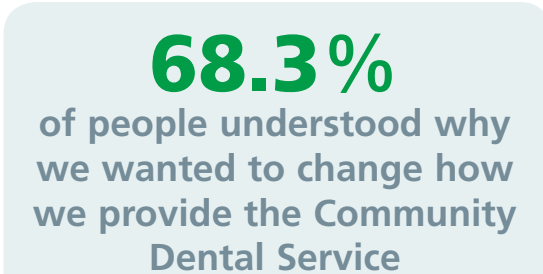
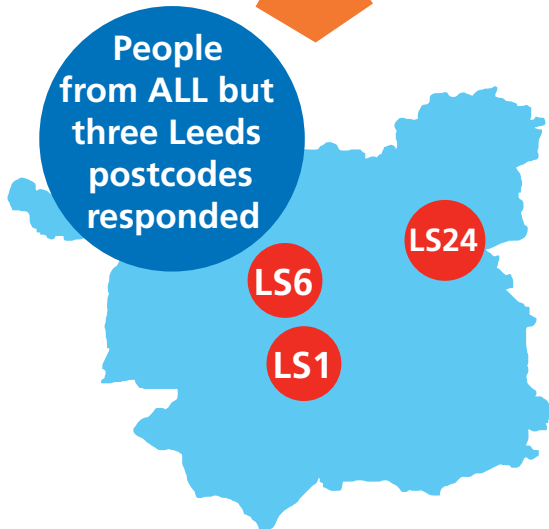


# Community Dental Service feedback



**50%**  
said they had  
a disability



Most people were happy with the choice of **AM** or **PM** appointments



**20%** said they would like Saturday morning appointments

**17.5%** would like early evening appointments

## We had great feedback about the service:

- 'Very good service'
- 'Great staff'
- 'Good NHS practice'
- 'Great treatment and care'
- 'Excellent treatment'



## People were concerned about:

- Accessibility
- Closing sites that are busy
- Extra travel and the costs of taxis
- Being able to see their usual dentist
- Less choice of sites and less appointments



## People liked:

- More choice of clinical appointments throughout the week at each site.
- Good information about the planned changes
- Being able to have all their treatment in one place

