

Catheter insertion pack

Cath-it - Richardson Healthcare Ltd

Includes most items required to remove and reinsert catheter – such as empty syringe, apron and three pairs of gloves.

Sodium Chloride 0.9% (irripods) not included in Cath-it pack order separately

Ref	Size	Pack	PIP code	Unit price
908410	Small / Medium	1	370-1034	£1.98
908420	Medium / Large	1	370-1042	£1.98
908430	Large / Extra Large	1	379-6935	£1.98

Note: When ordering on prescription, order these items as a unit together:
x1 Cath-it, x1 catheter and x1 lubricant

Cleaning

Irripods Sodium Chloride 0.9% irrigation solution - CD Medical

Catheterisation policy states to use sodium chloride 0.9% to cleanse meatus/site prior to catheterising

Ref	Size	Box qty.	PIP code	Box price
Irripods	20mls	25	313-7155	£5.84

For further advice, contact:

Continence, Urology and Colorectal Service
Halton Clinic, 2a Primrose Lane, Leeds LS15 7HR
Tel: 0113 843 3715 Email: info.cucs@nhs.net
Monday to Friday 8.30am to 4pm

Urinary Indwelling Catheter Products Guide



Consider all alternatives prior to inserting a urethral catheter - remove as soon as possible

Prices from drug tariff 2018 and correct at time of printing

Illustrated are first choice products (prescribers can prescribe any products on drug tariff following patient assessment and can take patient choice into consideration)

Produced by Continence Urology and Colorectal Service and Leeds CCG Medicines Optimisation Team

Best practice in urinary catheterisation

- A risk assessment must be completed for all patients who need a catheter and reviewed 12 weekly (or sooner following an incident)
- Intermittent self catheterisation should be used in preference to an indwelling catheter
- Use ch12-14 urethrally, ch14-18 suprapubically
- Refer to LCH Urinary Catheterisation policy/SOP – go to [Elsie](#) home page, select policies and guidelines, then type PL337 into search box. GPs - please refer to [Leeds Health Pathways Antimicrobial Prescribing Guidelines](#)
- Hand hygiene: wear apron and gloves when touching catheter
- Maintain closed system

For home delivery, patient can use local pharmacy or dispensing appliance contractor (DAC). Prescription required.

Has your patient got signs and symptoms of a catheter associated urinary tract infection (CAUTI)?

Diagnosis of a CAUTI must always involve assessing for clinical signs and symptoms compatible with a CAUTI. Signs and symptoms include:

- Fever
- Rigors, shivering, shaking
- New onset or worsening confusion / delirium
- Malaise / lethargy with no other identified cause
- Back pain
- Pelvic discomfort / pain
- Acute haematuria



Dip stick testing of urine must **NOT** be used to diagnose a CAUTI, because:

- Patients with a urinary catheter are likely to always have non visible haematuria due to ongoing trauma of the catheter
- Patients with a urinary catheter are likely to have bacterial colonisation of their urine due to the presence of the catheter
- These can all be normal findings in a catheterised patient and in isolation does not indicate infection



When to take a catheter sample of urine (CSU)

- A CSU should only be obtained when a diagnosis of CAUTI has been made
- Obtain the CSU before the patient commences antibiotics
- The CSU will help guide antimicrobial treatment but does not help in establishing the diagnosis
- Obtaining a CSU when there is no clinical evidence of a CAUTI may lead to a false positive result and unnecessary treatment with antibiotics

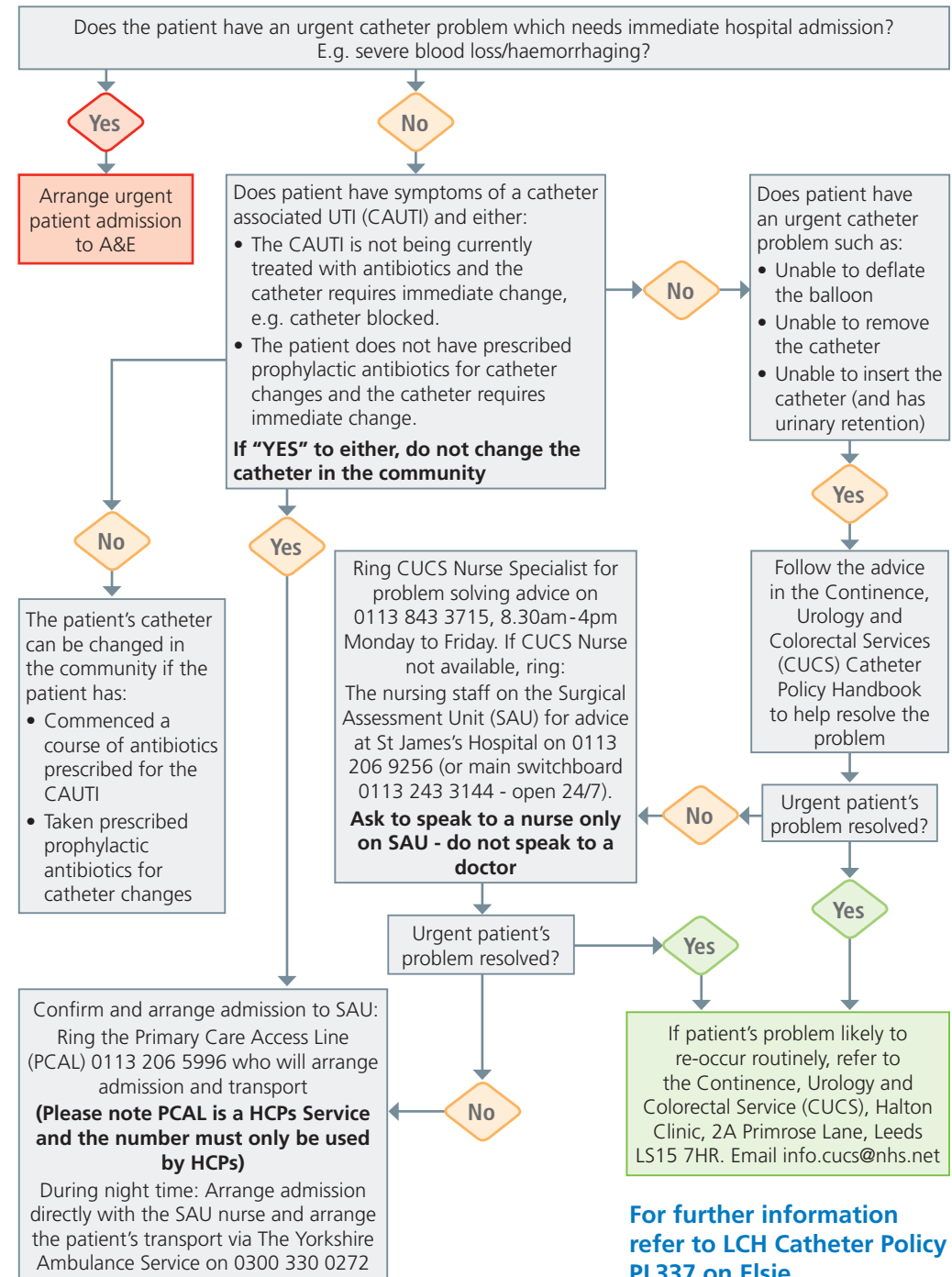
How to obtain a CSU:

- Obtain the specimen aseptically via the drainage bag needle free sampling port
- Clean the sampling port with a 70% isopropyl alcohol swab and allow to dry
- CSUs may also be obtained aseptically during catheterisation
- The sample should be sent in a red-topped (boric acid containing) sterile container and filled to the line
- A false negative culture result can occur with a small urine volume

Changing the catheter:

- Patients who have a diagnosis of a CAUTI should have their catheter changed with appropriate antibiotic cover
- Change the catheter after the patient has commenced antibiotics for the CAUTI
- Refer to [LCH Urinary Catheterisation Policy / Leeds Health Pathways Antimicrobial Prescribing Guidelines](#)

Community Nursing - urgent community patient catheter problem



For further information refer to LCH Catheter Policy PL337 on Elsie

Catheters

Hydrogel - Rusch Sympacath Aquaflate

SympaCath AquaFlate – Hydrogel coated latex for long-term use, up to 12 weeks (for both urethral and suprapubic use). Pre-filled and empty syringe included.

NEVER
use female
length catheter
urethrally in a
male

Ref	Length	Balloon	Ch. size	Box qty.	PIP code	Unit price
DH310112	Standard	10ml	12	1	285-6029	£6.12
DH310114	Standard	10ml	14	1	285-6060	£6.12
DH310116	Standard	10ml	16	1	285-6078	£6.12
DH210112	Female	10ml	12	1	285-6151	£6.12
DH210114	Female	10ml	14	1	285-6169	£6.12
DH210116	Female	10ml	16	1	285-6177	£6.12

Hydrogel catheter - BARD BIOCATH

Recommended first line for males urethrally

Bard Biocath Aquamatic Hydrogel coated with prefilled balloon – for long term use up to 12 weeks.

Ref	Length	Balloon	Ch. size	Box qty.	PIP code	Unit price
D2264/12	Standard	10ml	12	1	0517029	£8.60
D2264/14	Standard	10ml	14	1	0577072	£8.60

All-Silicone - Rusch Brilliant Aquaflate

Use if latex sensitivity. These catheters have a wider lumen and may be useful for patients who have sediment/debris and who are prone to blocking/by-passing.

For long-term use to 12 weeks (suitable for both urethral and suprapubic use). Pre-filled and empty syringe included.

Check
for latex
allergy

Ref	Length	Balloon	Ch. size	Box qty.	PIP code	Unit price
DA310112	Standard	10ml	12	1	317-3168	£7.07
DA310114	Standard	10ml	14	1	317-3176	£7.07
DA310116	Standard	10ml	16	1	317-3184	£7.07
DA210112	Female	10ml	12	1	317-3234	£7.07
DA210114	Female	10ml	14	1	317-3242	£7.07
DA210116	Female	10ml	16	1	317-3259	£7.07

Hydrogel Coated Silicone catheter - BARD Lubrisil

Recommended for males who block or find all silicone uncomfortable

Hydrogel coated silicone with prefilled syringe of sterile water – for long term use up to 12 weeks.

Ref	Length	Balloon	Ch. size	Box qty.	PIP code	Unit price
D1758/12	Standard	10ml	12	1	2800464	£9.60
D1758/14	Standard	10ml	14	1	2800472	£9.60

PTFE Coated Latex - Rusch PTFE Aquaflate

Consider using PTFE if change regime less than 4 weekly

For short to medium term use, up to 28 days.

(Suitable for both urethral and suprapubic use).

Pre-filled and empty syringe included.

Use if
catheter
life 4 weeks
or less

Ref	Length	Balloon	Ch. size	Box qty.	PIP code	Unit price
DP310112	Standard	10ml	12	1	285-6821	£2.16
DP310114	Standard	10ml	14	1	285-6839	£2.16
DP310116	Standard	10ml	16	1	285-6847	£2.16
DP210112	Female	10ml	12	1	285-6300	£2.16
DP210114	Female	10ml	14	1	285-6318	£2.16
DP210116	Female	10ml	16	1	285-6326	£2.16

Coloplast Folysil X-Tra Open Tip

All silicone catheter for long term use up to 12 weeks (for both urethral and suprapubic use). Pre filled and empty syringe included.

2nd Line
product for
patients who have
problems with blocking
due to sediment /
debris - try Brilliant
Aquaflate first.

Ref	Length	Balloon	Ch. size	Box qty.	PIP code	Unit price
AA8C12	Standard	10ml	12	1	355-1132	£6.44
AA8C14	Standard	10ml	14	1	355-1124	£6.44
AA8C16	Standard	10ml	16	1	355-1140	£6.44

Drainage bags

Leg bags Lever Tap - Prosys Clinisupplies

7 day use

Ref	Length	Capacity	Box qty.	PIP code	Unit price
P500S-LT	10cm	500ml	10	351-1474	£25.66
P500L-LT	30cm	500ml	10	351-1466	£25.66

(S = short L = long LT=lever tap)

Leg bags T-Tap - Prosys Clinisupplies

7 day use

Ref	Length	Capacity	Box qty.	PIP code	Unit price
P350S	10cm	350ml	10	299-6817	£25.66
P350L	30cm	350ml	10	299-6767	£25.66
P500S	10cm	500ml	10	299-6825	£25.66
P500L	30cm	500ml	10	299-6791	£25.66
P750S	10cm	750ml	10	299-6833	£25.66
P750L	30cm	750ml	10	299-6809	£25.66

(S = short tubing L = long tubing)

Leg bags Lever Tap - Ugo Optimum Medical

Ref	Capacity	Box qty.	PIP code	Unit price
5C/350/DI/L	350ml	10	400-8637	£23.94
6C/350/ST/L	350ml	10	400-8645	£23.94
1C/500/ST/L	500ml	10	400-8546	£23.94
2C/500/LT/L	500ml	10	400-8603	£23.94
7C/750/ST/L	750ml	10	400-8652	£23.94
8C/750/LT/L	750ml	10	400-8660	£23.94

(ST= short tube LT=long tube L=lever tap)

Leg bag T-Tap - Ugo Optimum Medical

Ref	Capacity	Box qty.	PIP code	Unit price
3C/500/ST/T	500ml	10	400-8611	£23.94
4C/500/LT/T	500ml	10	400-8629	£23.94

(ST= short tube LT=long tube T=T tap)

NEW!

Adjustable tube length bags are available from Great Bear if patient has very long/short leg 500ml bag - code 10105F

NEW!

2L night/bed bags

Consider drainable 2L bag if nursed in bed 24/7 otherwise use a single use 2L bag connected to leg bag ie. new bag per night. Recommended bags have a single use drainage tap for ease of emptying prior to disposal.

Night/bed bags - Prosys Clinisupplies

Ref	Description	Size	Box qty.	PIP code	Unit price
PSU2	*Single use night bag with drainable tap (use with leg bag/valve)	2L	10	327-6672	£9.41
P2000	Night bag slide tap Seven day use	2L	10	313-7940	£10.62
P2000-LT	Night bag lever tap Seven day use	2L	10	351-1458	£10.62

Night/bed bags - Ugo Optimum Medical

Soft silicone anti-kink tubing (no gloves)

NEW!

Ref	Description	Size	Box qty.	PIP code	Unit price
10NS/SU/DO	Non sterile single use drainable (use with leg bag/valve)	2L	10	400-8496	£3.06
12/S/D/L	Sterile 7 day drainable lever tap	2L	10	400-8512	£12.04
13/S/D/T	Sterile 7 day drainable T Tap	2L	10	400-8520	£12.04

Bard Spirit 2L night/bed bag - 7 day use

NEW!

Ref	Description	Size	Box qty.	PIP code	Unit price
DSBB2000	Longer 120cm tubing	2L	10	404-3782	£11.00

2L night/bed bags must be used on a stand

These are available free of charge on request from home delivery services/ Dispensing Appliance Contractors (DACs).

Ugo 4 weeks - Optimum Medical

- provide a 4 week pack Ugo 4 weeks. Useful if catheter is only temporary or if storage or over-ordering is a problem. Contains 28 single use night bags, 4 leg bags, 4 straps and 4 fixation devices and 1 hanger.

NEW!

Ref	Description	Size	Box qty.	PIP code	Unit price
3014	Short tube lever tap	500ml	1	403-8824	£29.19
3015	Long tube lever tap	500ml	1	403-8840	£29.19

Belly bag - Rusch

28 day use

Worn around waist. NB - no night bag with this product.

Unsuitable for patients who need frequent catheter changes or who have very large urine output at night. Never use in conjunction with catheter maintenance solutions.

Ref	Length	Box qty.	PIP code	Unit price
B1000P	1000ml, twist valve tap with sample port	1	303-7173	£10.62
B1000CT	1000ml, with 60cm drainage tubing	1	303-7165	£10.62

Catheter valves

Ugo catheter valve - Optimum Medical

Ref	Box qty.	PIP code	Unit price
3000	5	388-2388	£10.88

Flip-flo valve - Bard

Ref	Box qty.	PIP code	Unit price
BFF5	5	219-0577	£13.26

Care-Flo Valve - LINC Medical

Ref	Box qty.	PIP code	Unit price
CF1	5	344-1524	£7.59

Teleflex Catheter Valve Lever Tap

Packed as singles

Ref	Box qty.	PIP code	Unit price
850560-000000	1	383-6657	£2.00

Indications for use

To allow intermittent drainage, provide a flushing action, help maintain bladder storage, promote dignity and independence, reduce risk of traction and trauma (due to weight of urine in the bag).

Contraindications for use

cognitive impairment, poor dexterity, small bladder capacity, renal impairment, overactive bladder.

NEW!

NEW!

Useful for trialling

Fixation

1 Leg bag sleeve - Prosys

- as an addition to leg straps. Should be used with other fixation device eg. thigh strap OR adhesive device.

Ref	Size	Box qty.	PIP code	Unit price
PLS3881	Small 24 - 40cm	4	382-4711	£7.55
PLS3904	Medium 36 - 50cm	4	382-4729	£7.55
PLS3928	Large 40 - 65cm	4	382-4737	£7.55

Fixation devices are recommended to reduce friction/traction/tears

2 Ugo Fix Catheter strap - Optimum Medical

- assorted sizes available. Washable and re-useable. Laundry bags available on request.

NEW!

Ref	Size	Box qty.	PIP code	Unit price
3002	Short up to 45cm	5	393-3389	£12.59
3003	Medium up to 80cm	5	393-3397	£13.90
3009	Long up to 130cm	5	393-3405	£16.92
3010	Extra Long (abdominal)	5	393-3413	£18.93

3 Ugo Fix Gentle - Optimum Medical

- adhesive fixation device. Skin friendly and can be applied and repositioned on skin.

NEW!

Ref	Box qty.	PIP code	Unit price
3004	5	394-9054	£12.44

Multifix Gentle - Optimum Medical

Ref	Size	Box qty.	PIP code	Unit price
3030	Large 140mm x 40mm	5	405-9200	£23.50



Leg bag straps

Extra leg bag straps

- Optimum Medical

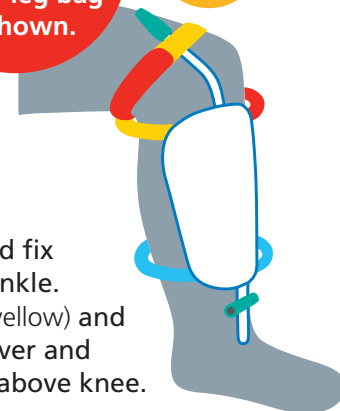
One long, one short to allow for above and below knee fixation (as shown).

Ref	Box qty.	PIP code	Unit price
3011	10	400-8538	£13.19

Take short strap (shown in blue) and fix around back of lower leg above ankle. Take long strap (shown in red and yellow) and take around back of knee, cross over and bring around front of leg and fix above knee.

Do not cut the long strap. It is for top of leg bag as shown.

NEW!



Lubricant gels

Optilube Active - sterile lubricating gel with lidocaine and Chlorhexidine Gluconate (allow 3-5 minutes to take effect)

Ref	Size	Box qty.	PIP code	Unit price
1160	6ml	10	366-2061	£10.90
1161	11ml	10	366-2079	£11.40

Optilube Active CHG Free with lidocaine - if patient sensitive to Chlorhexidine (allow 3-5 minutes to take effect)

Ref	Size	Box qty.	PIP code	Unit price
1167	6ml	10	404-0663	£10.80
1168	11ml	10	404-0671	£11.30

NEW!

Optilube Sterile - sterile lubricating gel without active ingredients

Ref	Size	Box qty.	PIP code	Unit price
1125	6ml	25	373-4357	£9.10
1126	11ml	25	373-4365	£9.60