


How do I make an appointment?

 **0113 843 4340**

If there is no answer please leave your name and telephone number and we will ring you back.

My appointment is

Date

Time

at

Location addresses

Beeston Hill Health Centre
123 Cemetary Road
Leeds LS11 8BS

The Reginald Centre
1st Floor
263 Chapeltown Road
Leeds LS7 3EX

Leeds Student Medical Practice
4 Blenheim Court
Blenheim Walk
Leeds LS2 9AE

Help us get it right

If you have a complaint, concern, comment or compliment please let us know by speaking to a member of our staff. We learn from your feedback and use the information to improve and develop our services.

If you would like to talk to someone outside the service contact the **Patient Experience Team** on **0113 220 8585**, Monday to Friday 9.30am to 4.30pm or email lch.pet@nhs.net

We can make this information available in Braille, large print, audio or other languages on request.

Further information

For more information about TB, visit the TB alert website at www.tbalert.org

or

NHS Choices at www.nhs.uk/conditions/tuberculosis



www.leedscommunityhealthcare.nhs.uk

© Leeds Community Healthcare NHS Trust, Jan 2019 ref: 1035 v2

NHS

**Leeds Community
Healthcare**
NHS Trust

New entrant tuberculosis

TB

screening service



Why have I been offered new entrant TB screening?

We understand you or members of your family have arrived in the UK within the last five years from a country with a high risk of TB.

It is important that you attend for this test even if you have had a chest x-ray as part of screening before arriving in the UK, even if you are feeling well.

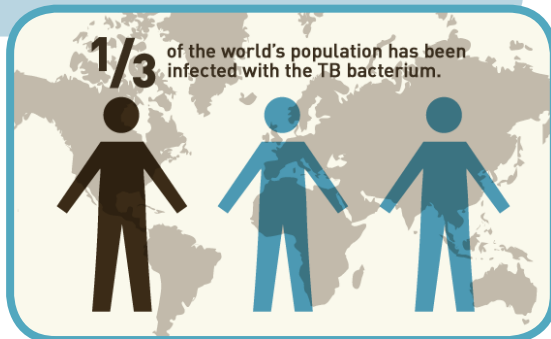
The screening and any TB related treatment are free.

FACT

In the world today:

Almost 9 million people are diagnosed with active TB every year.

Two billion people (1/3) have latent TB Infection (LTBI).



The screening is for active TB and latent TB (LTBI) but what is the difference?

What is active TB?

- A bacterial disease when TB germs have been breathed in and are active anywhere in the body
- It can be passed to others
- It can make you feel unwell e.g. cough, night sweats, weight loss
- It can show up on an x-ray
- It will need treatment to be cured



What is latent TB infection (LTBI)?

- When TB germs have been breathed in but are sleeping in the body
- It is not infectious to others
- It does not make you feel unwell
- It does not show up on an x-ray
- LTBI **CAN** wake up at any time to become active TB



How will the TB screening test be done?

Adults

A simple blood test
(one appointment only)



If you are pregnant it is still **SAFE** for you to have the test

Children

A simple skin test
(two appointments, one for the test and one to check the test)

