

Help us get it right

If you have a complaint, concern, comment or compliment, please let us know by speaking to a member of staff. We learn from your feedback and use the information you provide to improve and develop our services.

If you would like to talk to someone outside the service contact the **Patient Experience Team** on **0113 220 8585**, Monday to Friday 8.30am to 4.30pm or email lch.pet@nhs.net

Contact us

Neurology Discharge Team

c/o Community Neurological Rehabilitation Service
St Mary's Hospital
Green Hill Road
Leeds
LS12 3QE

Tel: 0113 855 5082

Email: neuro.dischargeteam@nhs.net

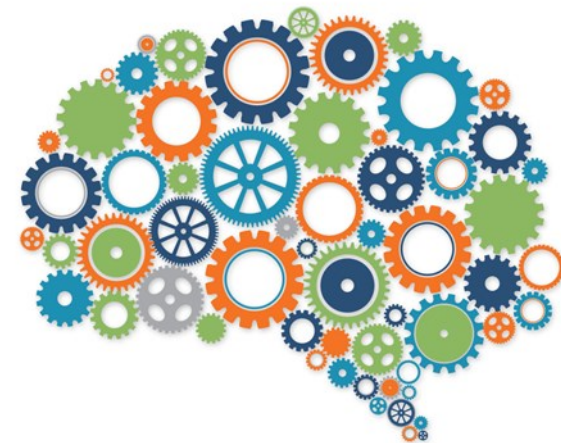
We can make this information available in Braille, large print, audio or other languages on request.

www.leedscommunityhealthcare.nhs.uk



Leeds Community
Healthcare
NHS Trust

THE NEUROLOGICAL DISCHARGE TEAM



Information for patients

The Neurology Discharge Team (NDT) is a small team of community Occupational Therapists and a Rehabilitation Assistant. We are part of the Community Neurological Rehabilitation Service based at St Mary's Hospital.

If you have had had a traumatic brain injury we are here to support your move back home. We can provide input to you if you have a Leeds GP and are over the age of 16 (and have left high school).

We will work closely with your hospital therapists to plan a safe and successful discharge, providing rehabilitation, advice and guidance in the early days as you adjust to being back home.

We aim to meet you on the ward before you go home and then we will visit you within 48 working hours of your discharge.

We will work with you and your close family/carers/relatives for up to 8 weeks once you are home, working towards goals that are meaningful to you. We will also provide education to you and your family/support network to help you come to terms with your new traumatic brain injury.

The service is available Monday to Friday between the hours of 08:00 and 16:00.

We have close links with other local services and will support you to access them if needed. At the end of our input we can also refer to other teams so that you can work towards your longer term goals.

Useful links

Welfare rights

CAB

Adult social care

Headway

Your named therapist is:

.....