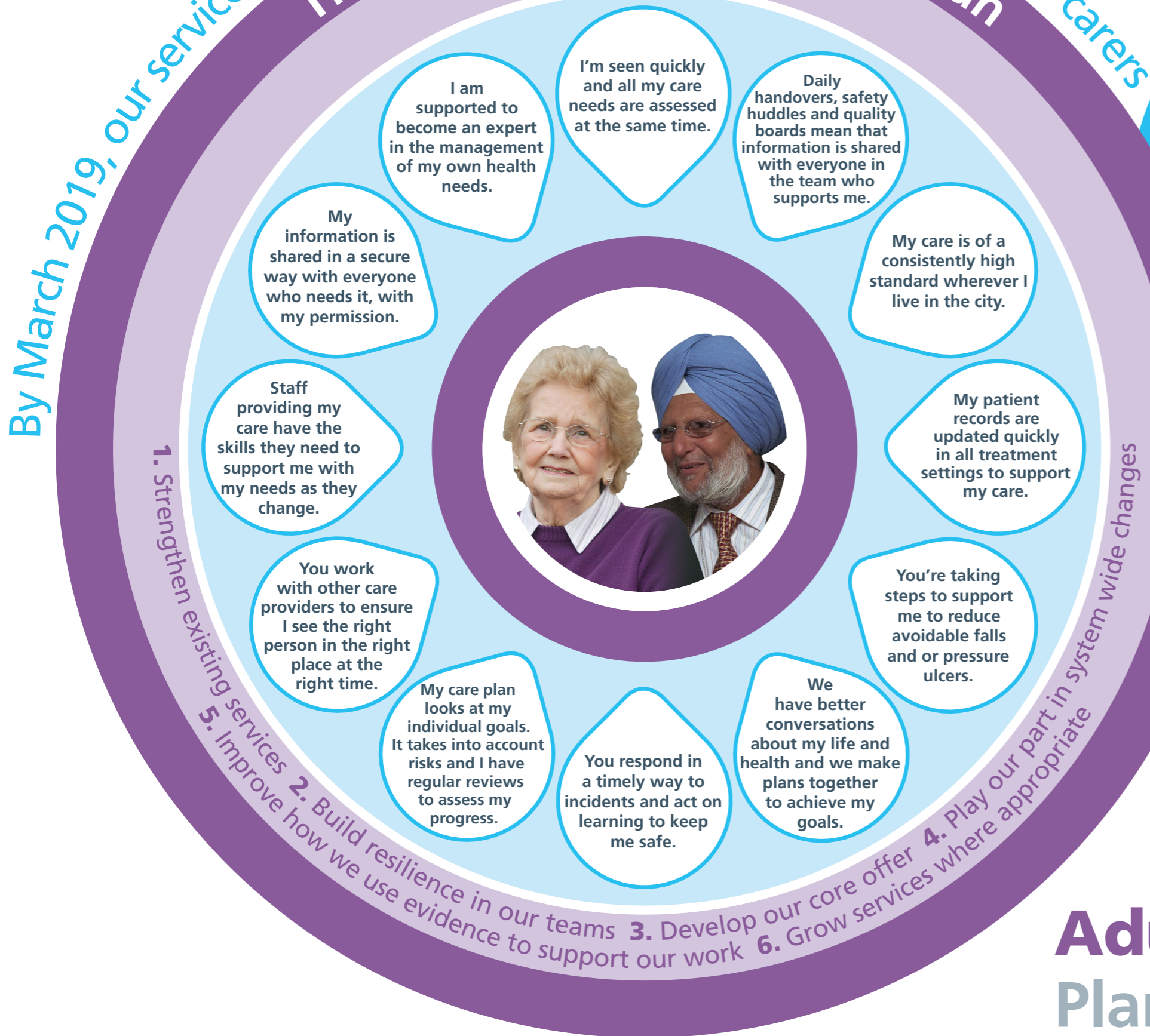


By March 2019, our services will be better for Mabel, Ajit Singh and their carers

The Leeds Health and Care Plan

Our six priorities



Quality must dos

- No category 4 and no avoidable pressure ulcers
- 4 hour response for referrals requiring a rapid response
- Falls assessment and prevention activities undertaken for all patients
- All incidents investigated in a timely manner according to LCH policy and learning is shared
 - Duty of Candour compliance
 - National quality improvements (CQUINs, wound management, hospital discharges to community)
- 100% recording of activity

Focus on... our staff

- Wellbeing at work
- Staff engagement (Working Lives Star)
- Better clinical supervision
- Supporting and empowering staff to use their clinical skills to best effect

Adult Services: Plan on a Page 2018/19