

## Contact us

If you would like more information or advice, please get in touch.

Tel: **0113 247 6286**

Monday to Thursday 9am – 5pm

Friday 9am – 4.30pm

Email: [food.safety@leeds.gov.uk](mailto:food.safety@leeds.gov.uk)

You were visited today by

---

Our contact number

---

## Help us get it right

If you have a complaint, concern, comment or compliment please let us know by speaking to a member of our staff. We learn from your feedback and use the information to improve and develop our services.

If you would like to talk to someone outside the service contact the **Patient Advice and Liaison Service (PALS)** on **0113 220 8585**, Monday to Friday 9.30am to 4.30pm or email [lch.pals@nhs.net](mailto:lch.pals@nhs.net)

**We can make this information available in Braille, large print, audio or other languages on request.**

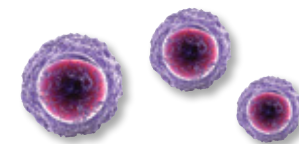


*Working together for a safer healthcare environment*

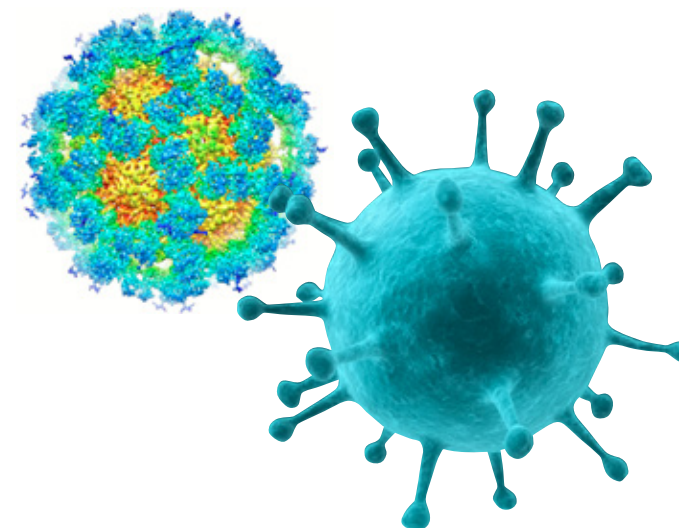
Leaflet produced by the Infection Prevention and Control Team at Leeds Community Healthcare NHS Trust.

© Leeds Community Healthcare NHS Trust, June 2014 ref: 1097

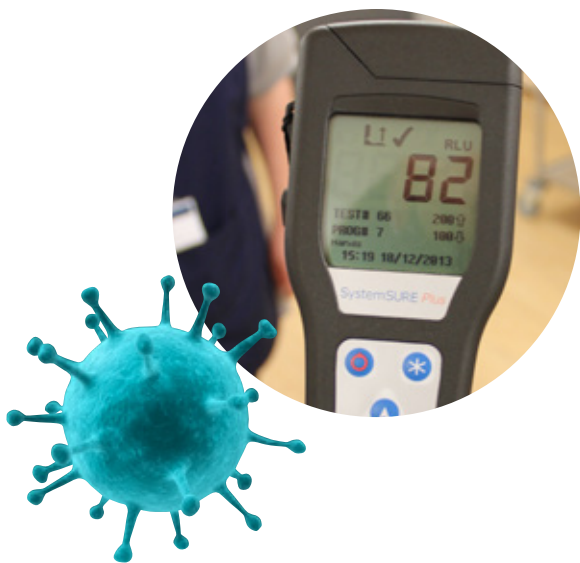
Leeds Community Healthcare   
NHS Trust



# Communicable Disease Control Nurses



**Patient information**



## Who are we?

We are registered nurses employed by Leeds Community Healthcare NHS Trust, based in the food and health team at Leeds City Council (LCC).

## What do we do?

We work with LCC's Health and Environmental Action Service and Public Health England (PHE) to reduce the incidence of gastro-intestinal infectious diseases within the local community.

Our role is to investigate, act and report on all individual cases and outbreaks of notifiable gastro-intestinal infectious diseases within Leeds.

We visit establishments and individual homes to offer information and advice about specific illnesses and other health issues.

We cannot offer treatment. However, we can advise you if you need medical advice from your GP or another health professional.



## When we are in your home

We are guests in your home and we will:

- treat you as an individual
- be respectful and value your privacy and dignity
- be polite and helpful
- keep your personal information safe and confidential. There may be special circumstances when we need your consent to share information with other professionals
- ask if you agree to a student being present when we visit as we help train nursing, medical and environmental health students.

## More information

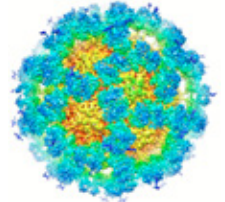
**Leeds Community Healthcare NHS Trust**  
0113 220 8500  
[www.leedscommunityhealthcare.nhs.uk](http://www.leedscommunityhealthcare.nhs.uk)

### NHS 111

24 hour health advice and information and urgent medical help that isn't a 999 emergency  
[www.nhs.uk](http://www.nhs.uk)

### Public Health England

0113 386 0300  
[www.hpa.org.uk](http://www.hpa.org.uk)



### Holiday Travel Watch

Independent holiday advice  
0345 017 9229  
[www.holidaytravelwatch.com](http://www.holidaytravelwatch.com)

### Leeds City Council

General enquiries  
0113 222 4444  
Mon to Fri, 8am – 6pm  
[www.leeds.gov.uk](http://www.leeds.gov.uk)

### Leeds Safeguarding Adults

Help due to disability, age or illness  
0113 224 3511  
[www.leedssafeguardingadults.org.uk](http://www.leedssafeguardingadults.org.uk)

### Carers Leeds

Practical help and support  
0113 246 8338  
[www.carersleeds.org.uk](http://www.carersleeds.org.uk)

